

Deploying Oracle FLEXCUBE Application on WebSphere
Oracle FLEXCUBE Universal Banking
Release 12.1.0.0.0
[October] [2015]



Table of Contents

- 1. DEPLOYING ORACLE FLEXCUBE ON WEBSHERE 1-2
 - 1.1 INTRODUCTION 1-2
 - 1.2 DEPLOYING APPLICATION 1-2
 - 1.2.1 *FCUBS Application Deployment* 1-2
 - 1.3 STANDALONE SCHEDULER CONFIGURATION 1-14

1. Deploying Oracle FLEXCUBE on WebSphere

1.1 Introduction

This document explains the steps to deploy the Oracle FLEXCUBE UBS application on IBM WebSphere application server.

1.2 Deploying Application

1.2.1 FCUBS Application Deployment

To deploy Oracle FLEXCUBE UBS application on WebSphere application server, follow the steps given below:

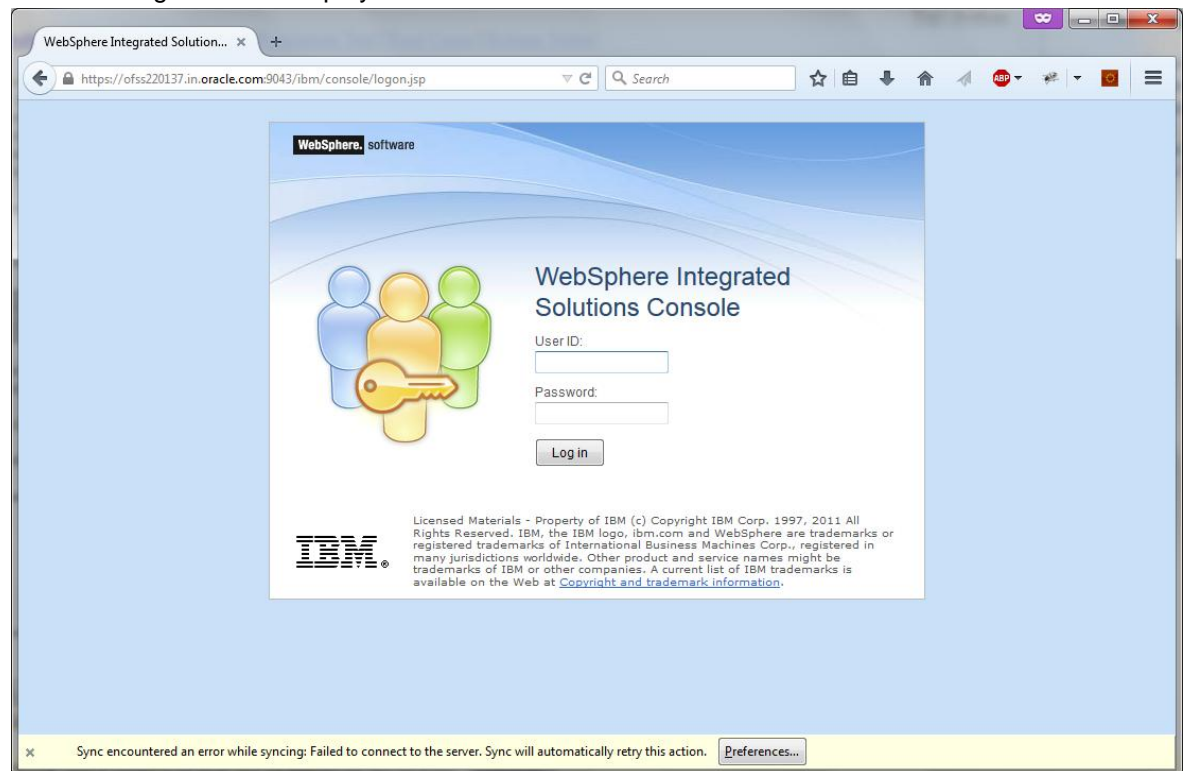
1. Open the Administrative Console of WebSphere server:

Open an internet browser and type the WebSphere Admin Console URL
`http://{Host}:{Port}/console.`

Eg: `https://10.10.10.10:1010/console`

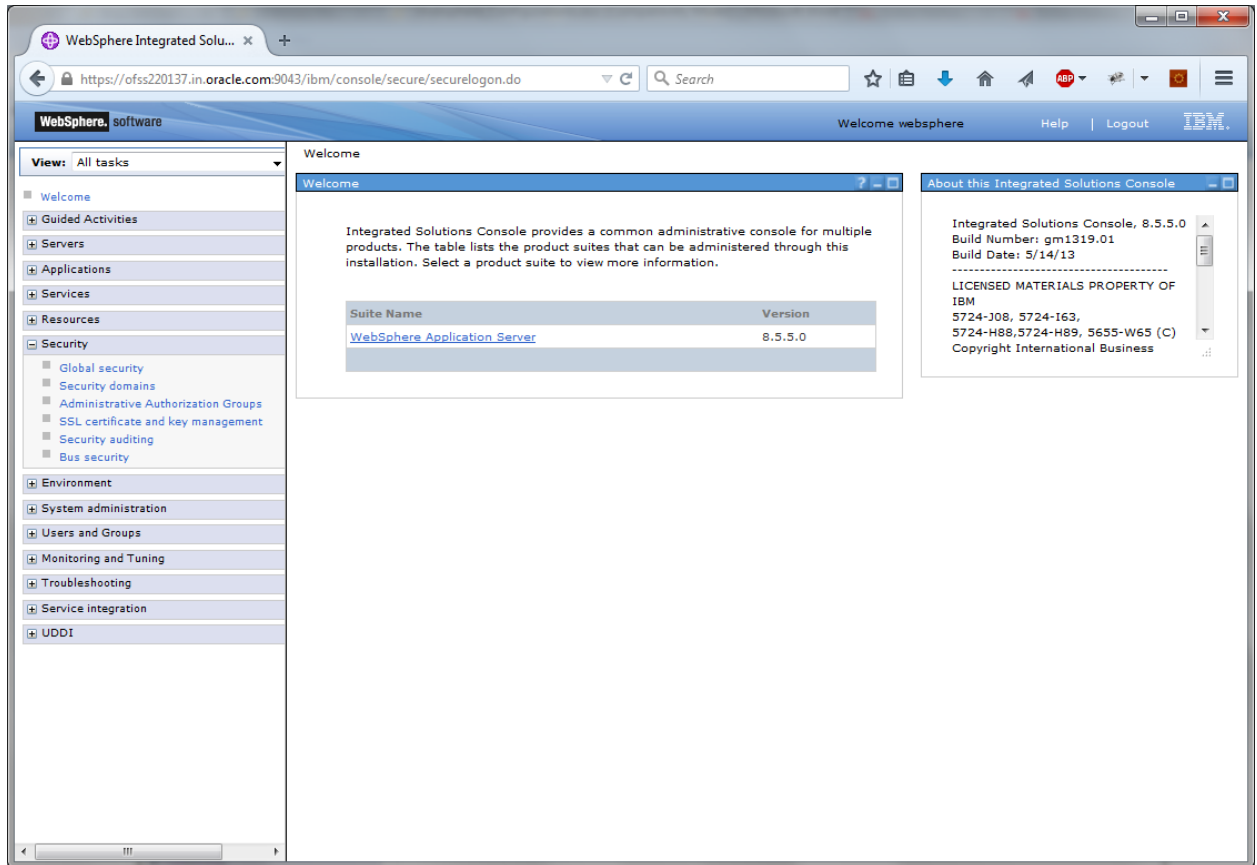
In the above example, 10.10.10.10 is the machine IP address on which WebSphere is running.

The following screen is displayed:



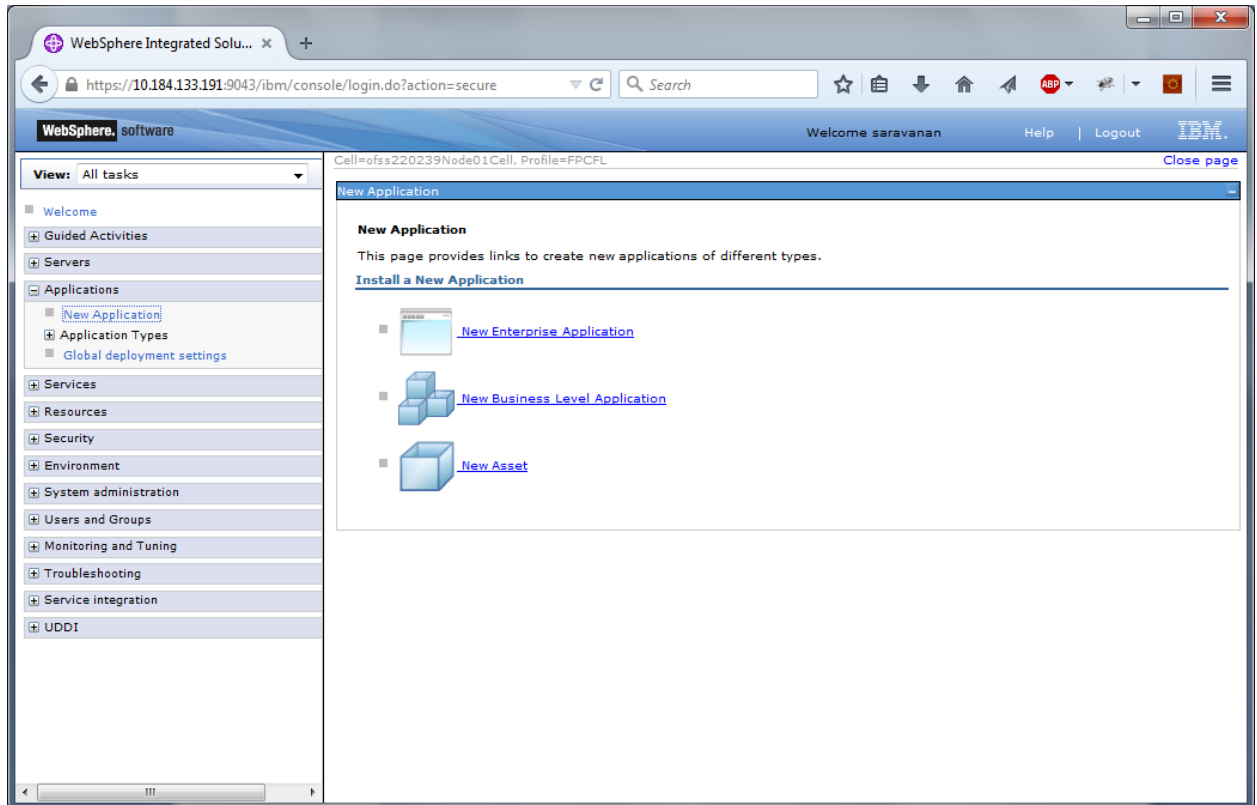
2. Enter the user name and password and click 'Log In' to log in to the application server.
3. Navigate to the WebSphere Home Page.

The following screen is displayed.

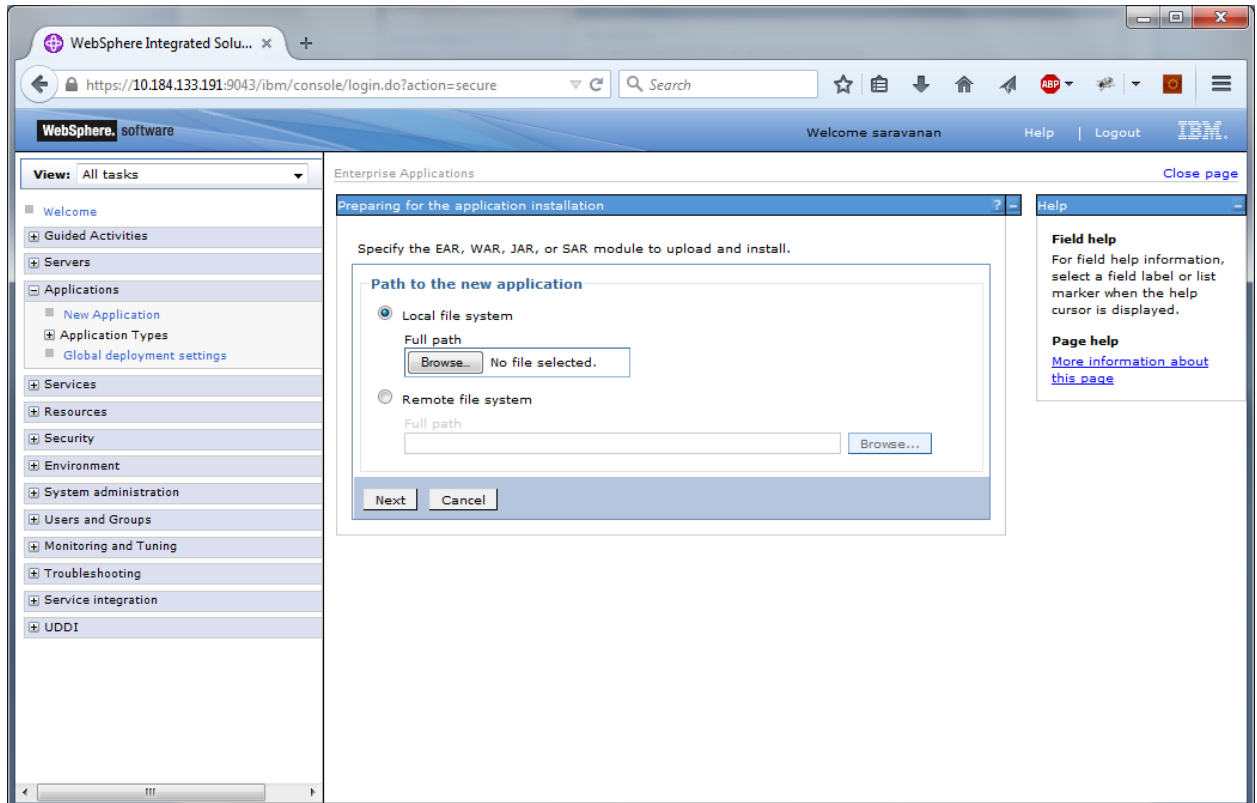


4. Expand Applications from left-side menu and Click 'New Application'.

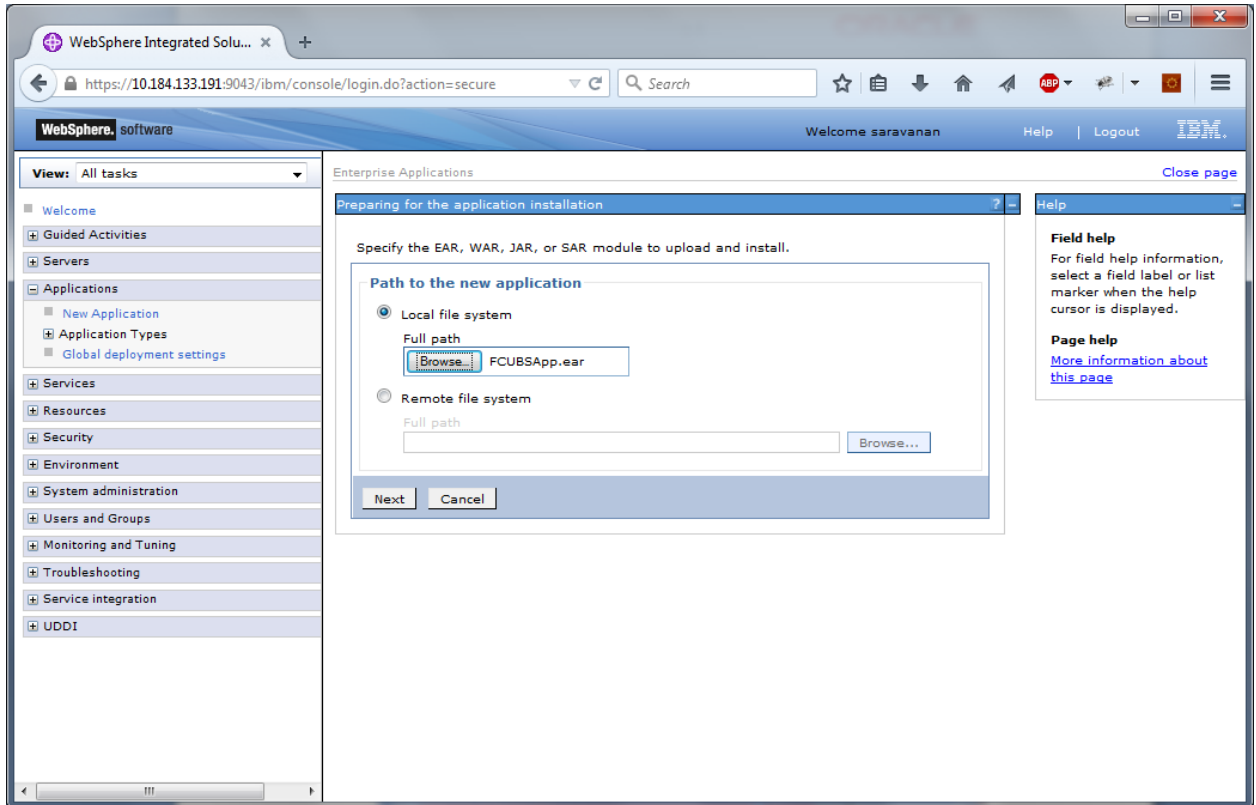
The following screen is displayed.



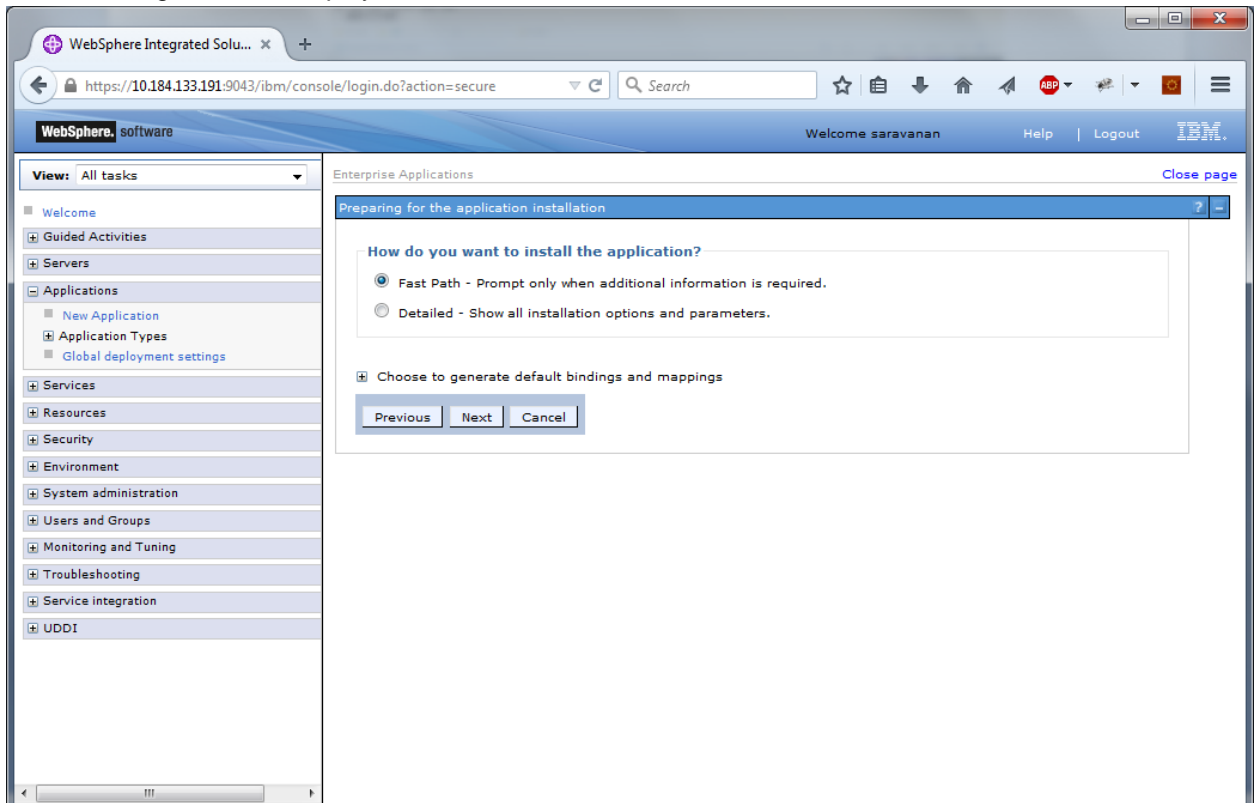
5. Click 'New Enterprise Application'.



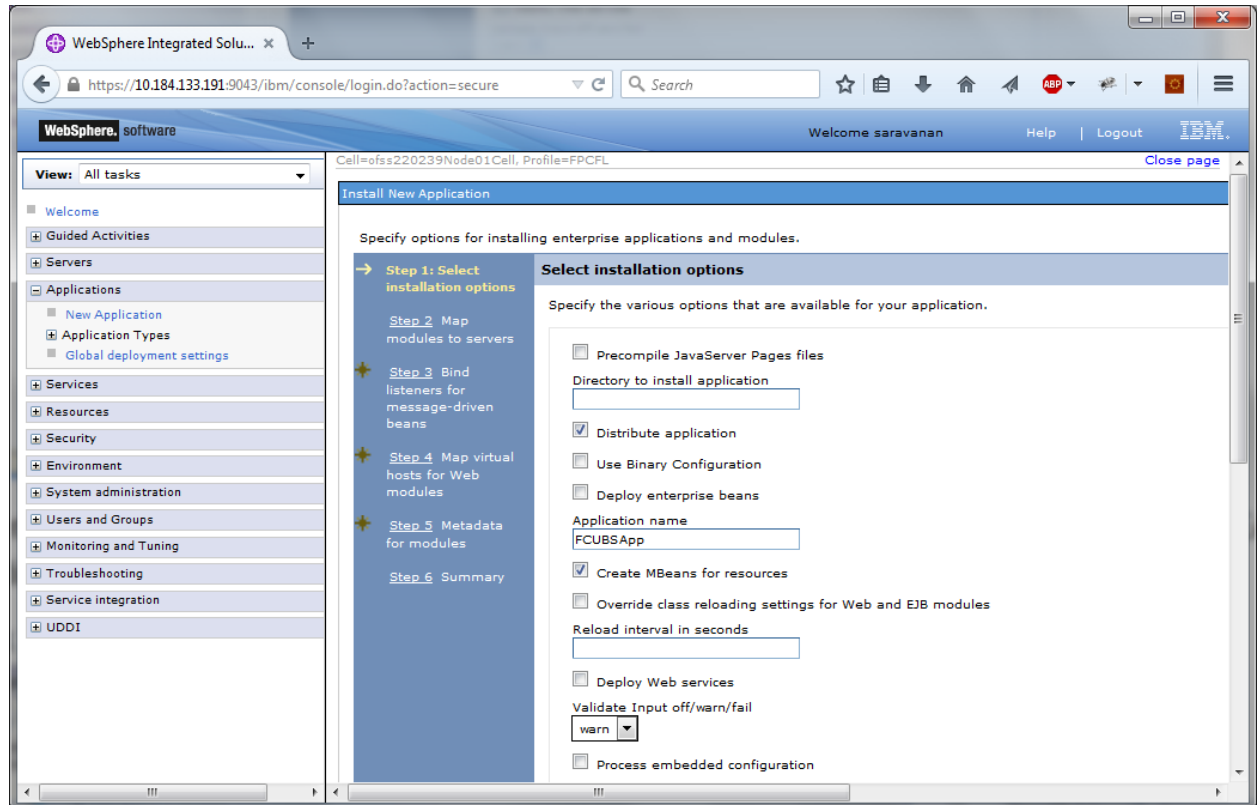
6. Browse the application EAR file and click next button



The following screen is displayed.



7. Click 'Next'. The following screen is displayed.



8. Enter the Application Name. This should be the application name mentioned as part of EAR building.

9. Click 'Next'.

The screenshot shows the WebSphere Integrated Solutions console. The browser address bar displays `https://10.184.133.191:9043/ibm/console/secure/securelogon.do?csrfid=EhK-9M/Vv-uXW8l`. The page title is "WebSphere Integrated Solutions" and the user is logged in as "saravanan".

The left navigation pane shows a tree view with categories like "Welcome", "Guided Activities", "Servers", "Applications", "Services", "Resources", "Security", "Environment", "System administration", "Users and Groups", "Monitoring and Tuning", "Troubleshooting", "Service integration", and "UDDI".

The central area shows a progress indicator with six steps:

- Step 1: Select installation options
- Step 2: Map modules to servers (Current step)
- Step 3: Bind listeners for message-driven beans
- Step 4: Map virtual hosts for Web modules
- Step 5: Metadata for modules
- Step 6: Summary

The main content area is titled "Map modules to servers" and contains the following text:

Specify targets such as application servers or clusters of application servers where you want to install the modules to this application. Modules can be installed on the same application server or dispersed among several application servers as targets that serve as routers for requests to this application. The plug-in configuration file (plugin-cfg.xml) generated, based on the applications that are routed through.

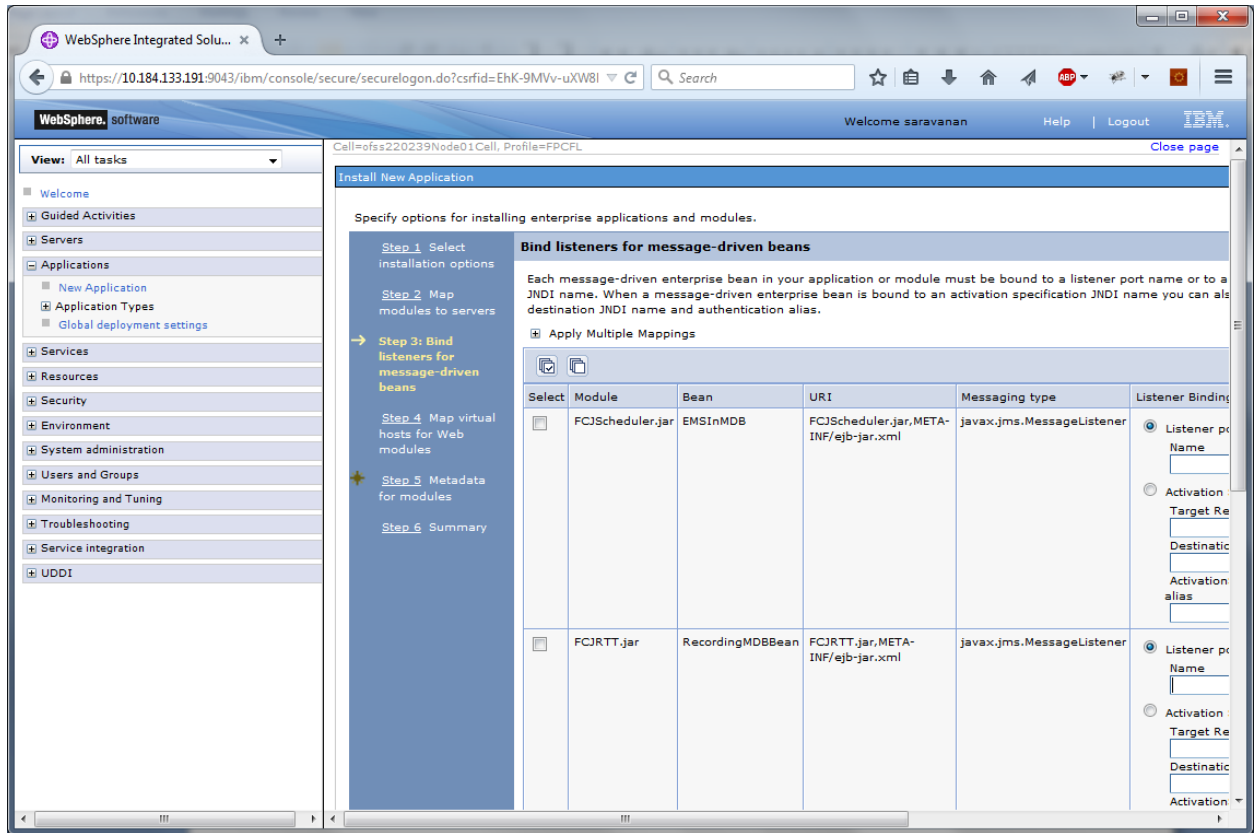
Clusters and servers:

Below this is a table with the following columns: Select, Module, URI, and Server.

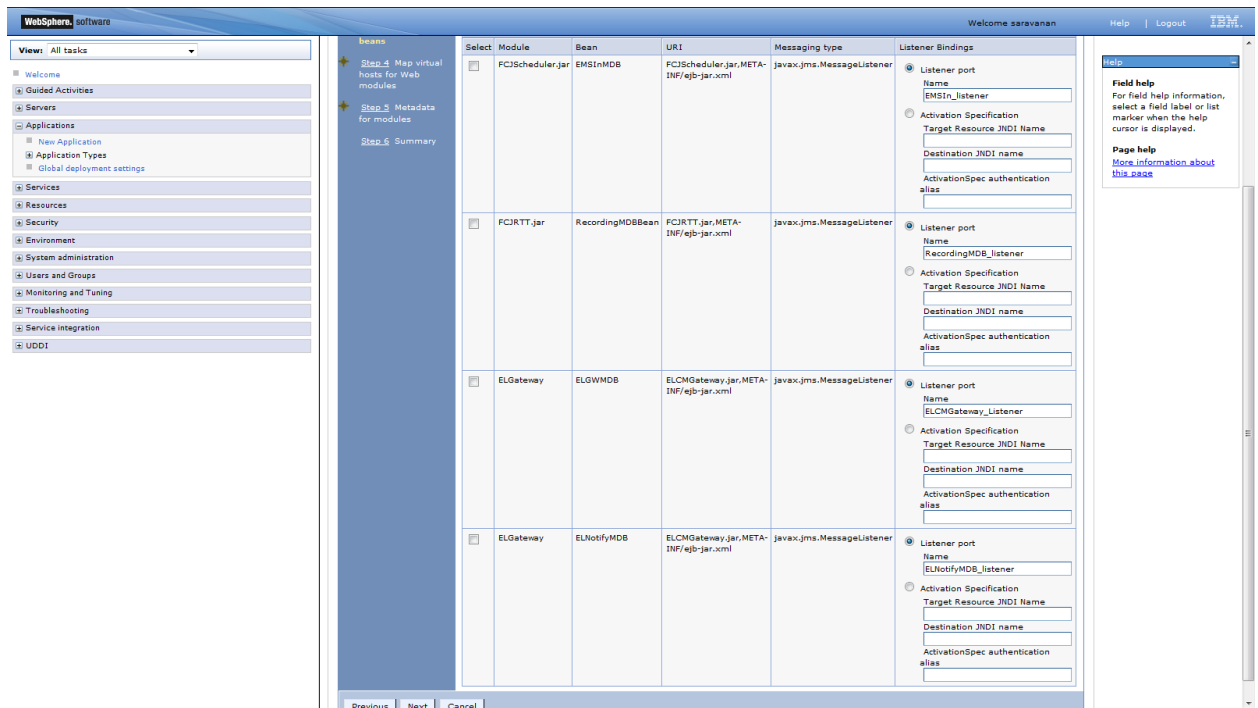
Select	Module	URI	Server
<input type="checkbox"/>	FCJGeneralEJB.jar	FCJGeneralEJB.jar,META-INF/ejb-jar.xml	WebSphere:cell=ofss220239Node01Cell,node=ofss220239Node01,server=server1
<input type="checkbox"/>	FCJSMS.jar	FCJSMS.jar,META-INF/ejb-jar.xml	WebSphere:cell=ofss220239Node01Cell,node=ofss220239Node01,server=server1
<input type="checkbox"/>	FCJBatch.jar	FCJBatch.jar,META-INF/ejb-jar.xml	WebSphere:cell=ofss220239Node01Cell,node=ofss220239Node01,server=server1
<input type="checkbox"/>	FCServiceEJB.jar	FCServiceEJB.jar,META-INF/ejb-jar.xml	WebSphere:cell=ofss220239Node01Cell,node=ofss220239Node01,server=server1
<input type="checkbox"/>	FCJScheduler.jar	FCJScheduler.jar,META-INF/ejb-jar.xml	WebSphere:cell=ofss220239Node01Cell,node=ofss220239Node01,server=server1
<input type="checkbox"/>	FCJRJT.jar	FCJRJT.jar,META-INF/ejb-jar.xml	WebSphere:cell=ofss220239Node01Cell,node=ofss220239Node01,server=server1
<input type="checkbox"/>	ELCMEJB	ELCMEJB.jar,META-INF/ejb-jar.xml	WebSphere:cell=ofss220239Node01Cell,node=ofss220239Node01,server=server1
<input type="checkbox"/>	ELGateway	ELCMGateway.jar,META-INF/ejb-jar.xml	WebSphere:cell=ofss220239Node01Cell,node=ofss220239Node01,server=server1
<input type="checkbox"/>	FlexCubeCorporate	FCJNeoWeb.war,WEB-INF/web.xml	WebSphere:cell=ofss220239Node01Cell,node=ofss220239Node01,server=server1
<input type="checkbox"/>	Enterprise Limits Gateway	ELCMWeb.war,WEB-INF/web.xml	WebSphere:cell=ofss220239Node01Cell,node=ofss220239Node01,server=server1

At the bottom of the main content area, there are three buttons: "Previous", "Next" (highlighted), and "Cancel".

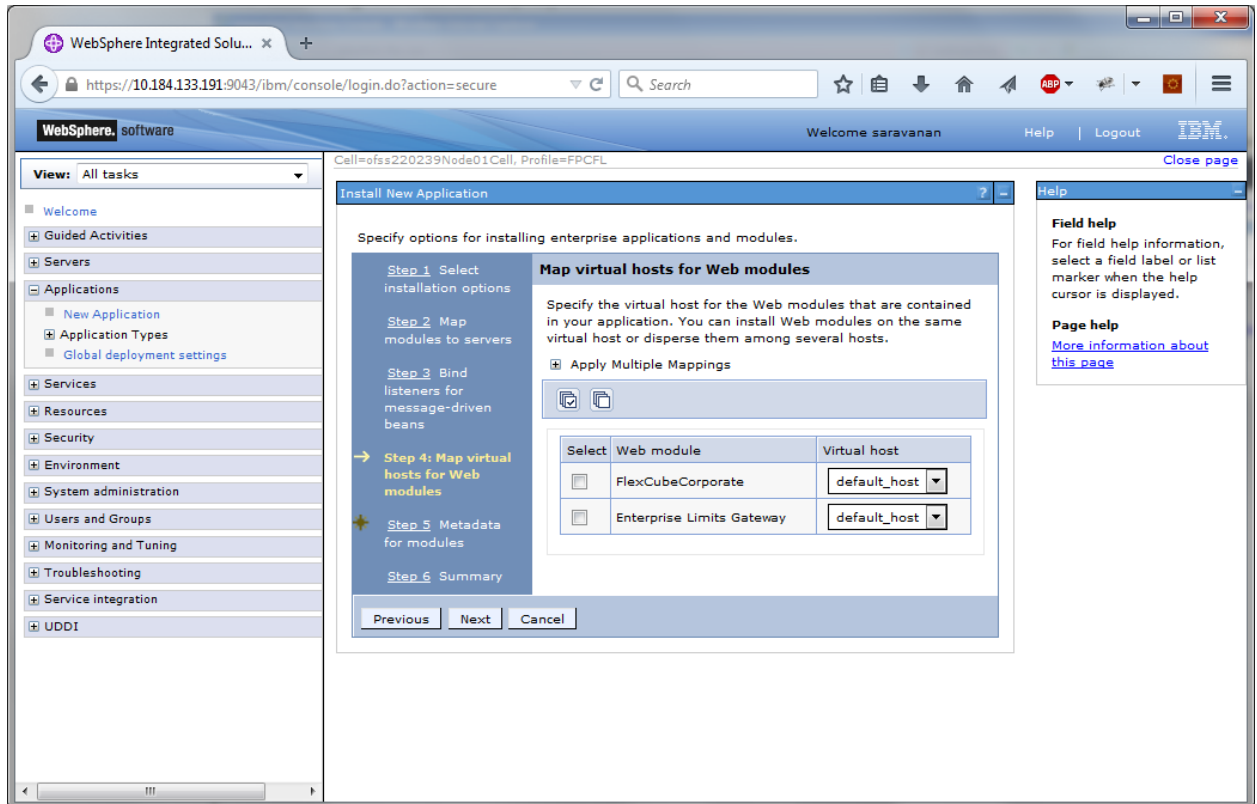
10. Check all the options. Click 'Next'. The following screen is displayed.



11. Specify the details as shown in the figure.



12. Click 'Next'. Following screen is displayed



13. Click 'Next'.

The following screen is displayed.

WebSphere Integrated Solu... x +

https://10.184.133.191:9043/ibm/console/login.do?action=secure

WebSphere software Welcome saravanan Help | Logout IBM.

View: All tasks

- Welcome
- Guided Activities
- Servers
- Applications
 - New Application
 - Application Types
 - Global deployment settings
- Services
- Resources
- Security
- Environment
- System administration
- Users and Groups
- Monitoring and Tuning
- Troubleshooting
- Service integration
- UDDI

listeners for message-driven beans

Step 4 Map virtual hosts for Web modules

→ Step 5: Metadata for modules

Step 6 Summary

read. If the attribute remains false, then the annotation-based metadata is scanned each time the module is read and can impact performance.

Module	URI	metadata-complete attribute
FCJGeneralEJB.jar	FCJGeneralEJB.jar,META-INF/ejb-jar.xml	<input type="checkbox"/>
FCJSMS.jar	FCJSMS.jar,META-INF/ejb-jar.xml	<input type="checkbox"/>
FCJBatch.jar	FCJBatch.jar,META-INF/ejb-jar.xml	<input type="checkbox"/>
FCServiceEJB.jar	FCServiceEJB.jar,META-INF/ejb-jar.xml	<input type="checkbox"/>
FCJScheduler.jar	FCJScheduler.jar,META-INF/ejb-jar.xml	<input type="checkbox"/>
FCJRTT.jar	FCJRTT.jar,META-INF/ejb-jar.xml	<input type="checkbox"/>
ELCMEJB	ELCMEJB.jar,META-INF/ejb-jar.xml	<input type="checkbox"/>
ELGateway	ELCMGateway.jar,META-INF/ejb-jar.xml	<input type="checkbox"/>
FlexCubeCorporate	FCJNeoWeb.war,WEB-INF/web.xml	<input type="checkbox"/>
Enterprise Limits Gateway	ELCMWeb.war,WEB-INF/web.xml	<input type="checkbox"/>

Previous Next Cancel

FCJ Highlight All Match Case 20 of 20 matches

Help

Field help
For field help information, select a field label or list marker when the help cursor is displayed.

Page help
[More information about this page](#)

Click next.

WebSphere Integrated Solu... x +

https://10.184.133.191:9043/ibm/console/secure/securelogon.do?csrfid=EhK-9MVv-uXW8l

WebSphere software Welcome saravanan Help | Logout IBM.

View: All tasks

- Welcome
- Guided Activities
- Servers
- Applications
 - New Application
 - Application Types
 - Global deployment settings
- Services
- Resources
- Security
- Environment
- System administration
- Users and Groups
- Monitoring and Tuning
- Troubleshooting
- Service integration
- UDDI

Install New Application

Specify options for installing enterprise applications and modules.

Step 1 Select installation options

Step 2 Map modules to servers

Step 3 Bind listeners for message-driven beans

Step 4 Map virtual hosts for Web modules

Step 5 Metadata for modules

→ Step 6: Summary

Summary

Summary of installation options

Options	Values
Precompile JavaServer Pages files	No
Directory to install application	
Distribute application	Yes
Use Binary Configuration	No
Deploy enterprise beans	No
Application name	FCUBSApp
Create MBeans for resources	Yes
Override class reloading settings for Web and EJB modules	No
Reload interval in seconds	
Deploy Web services	No
Validate Input off/warn/fail	warn
Process embedded configuration	No
File Permission	*.*\dll=755*.*\so=755*.*\a=755*.*\s=755
Application Build ID	Unknown
Allow dispatching includes to remote resources	No
Allow servicing includes from remote resources	No
Business level application name	
Asynchronous Request Dispatch Type	Disabled
Allow EJB reference targets to resolve automatically	No

Help

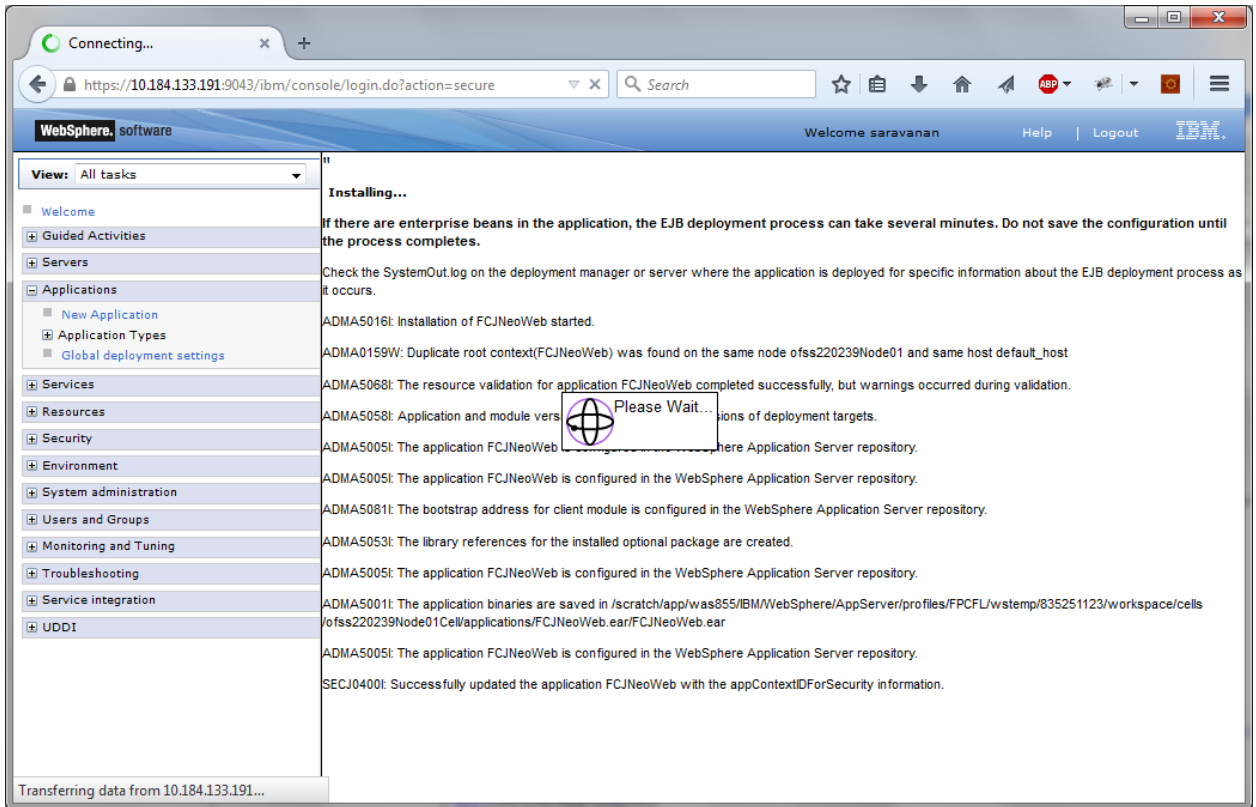
Field help
For field help information, select a field label or list marker when the help cursor is displayed.

Page help
[More information about this page](#)

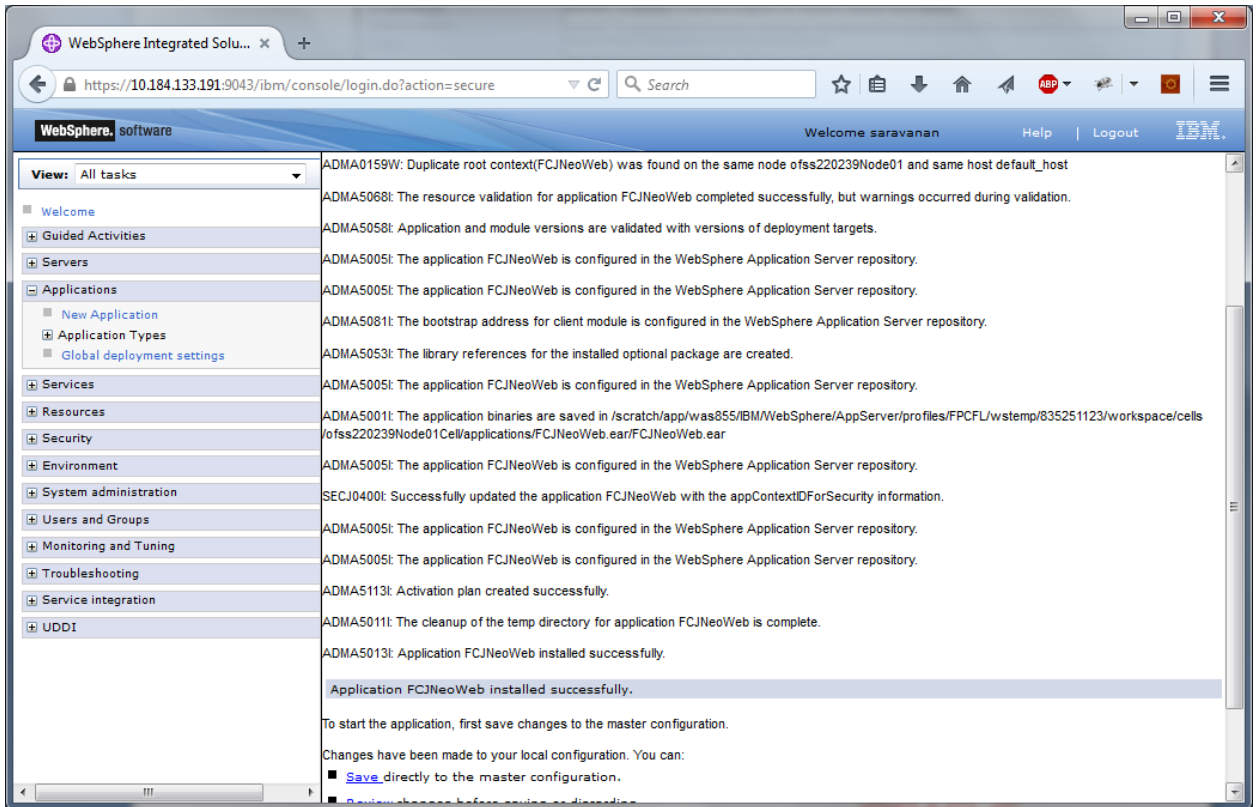
Command Assistance
[View administrative scripting command for last action](#)

14. Click 'Finish'.

The following screen is displayed.

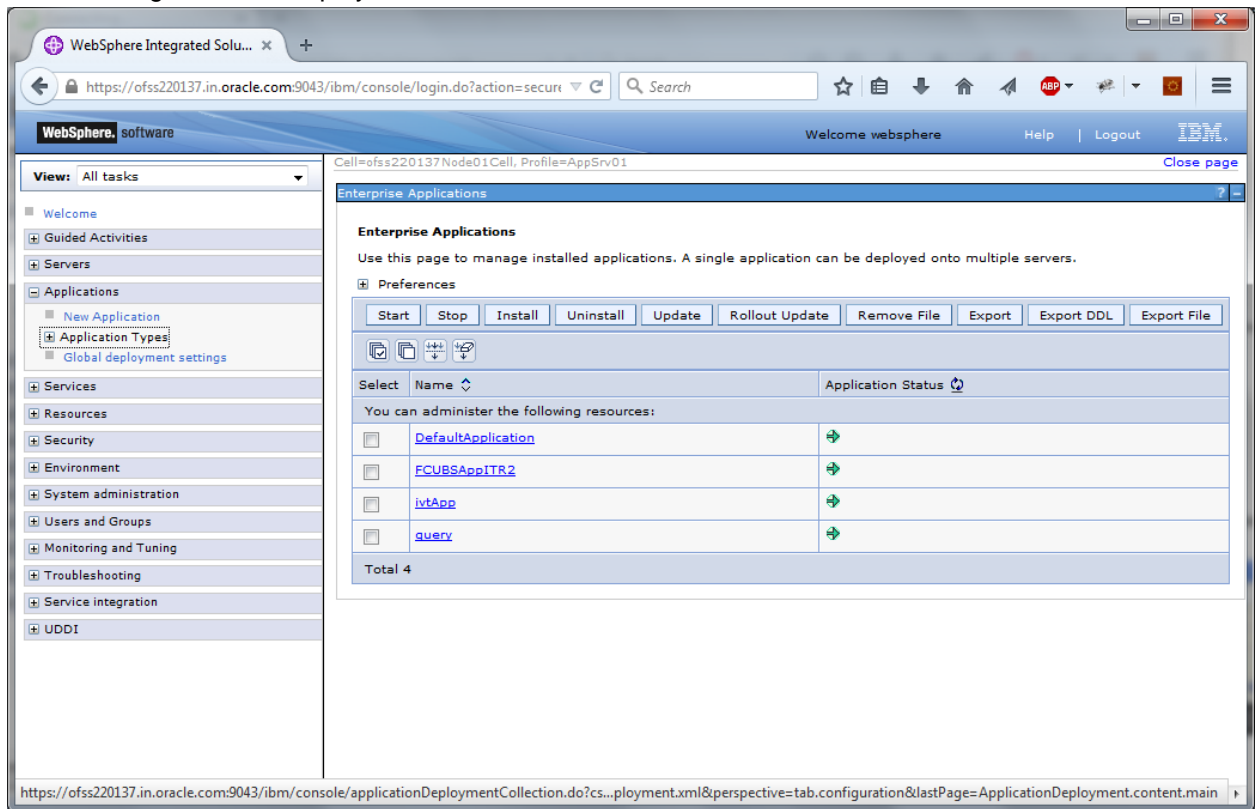


Wait for few seconds...



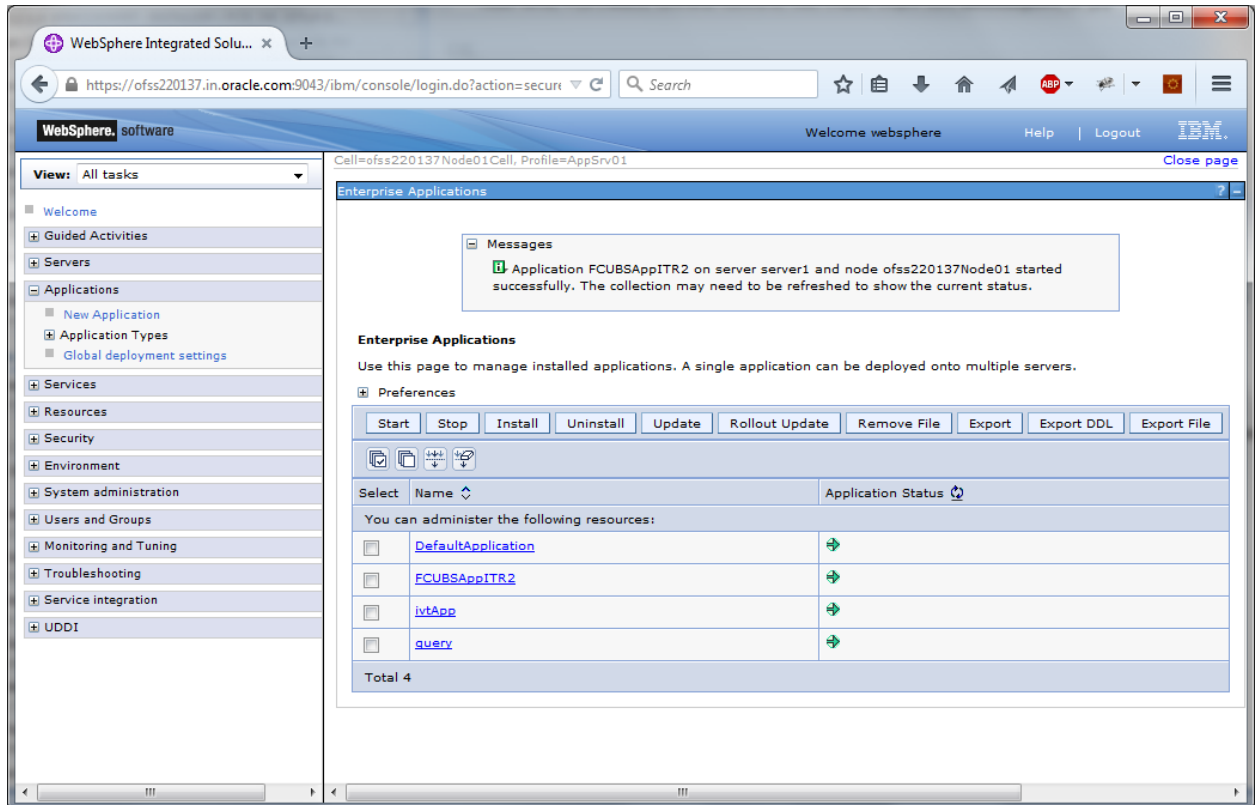
15. Click 'Save'.

The following screen is displayed.



16. Select the application and click 'Start'.

The application starts as shown below:



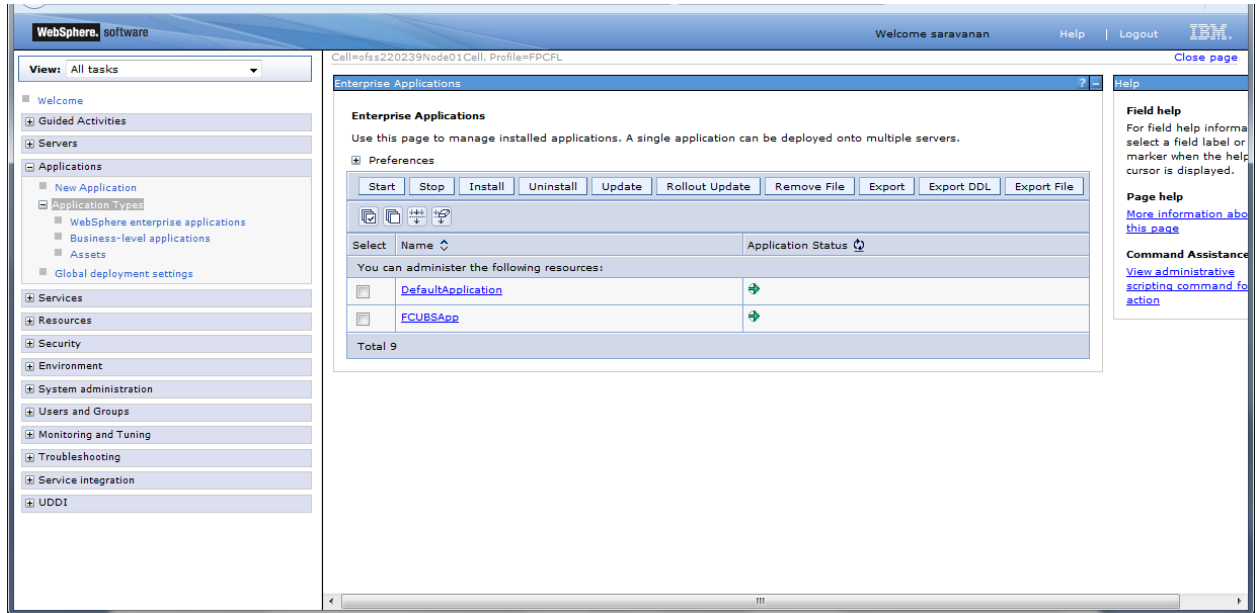
This completes the deployment of EAR (FCJNeoWeb.ear) on IBM WebSphere 8.5.5.0 Application Server from the Administration Console.

1.3 Standalone Scheduler Configuration

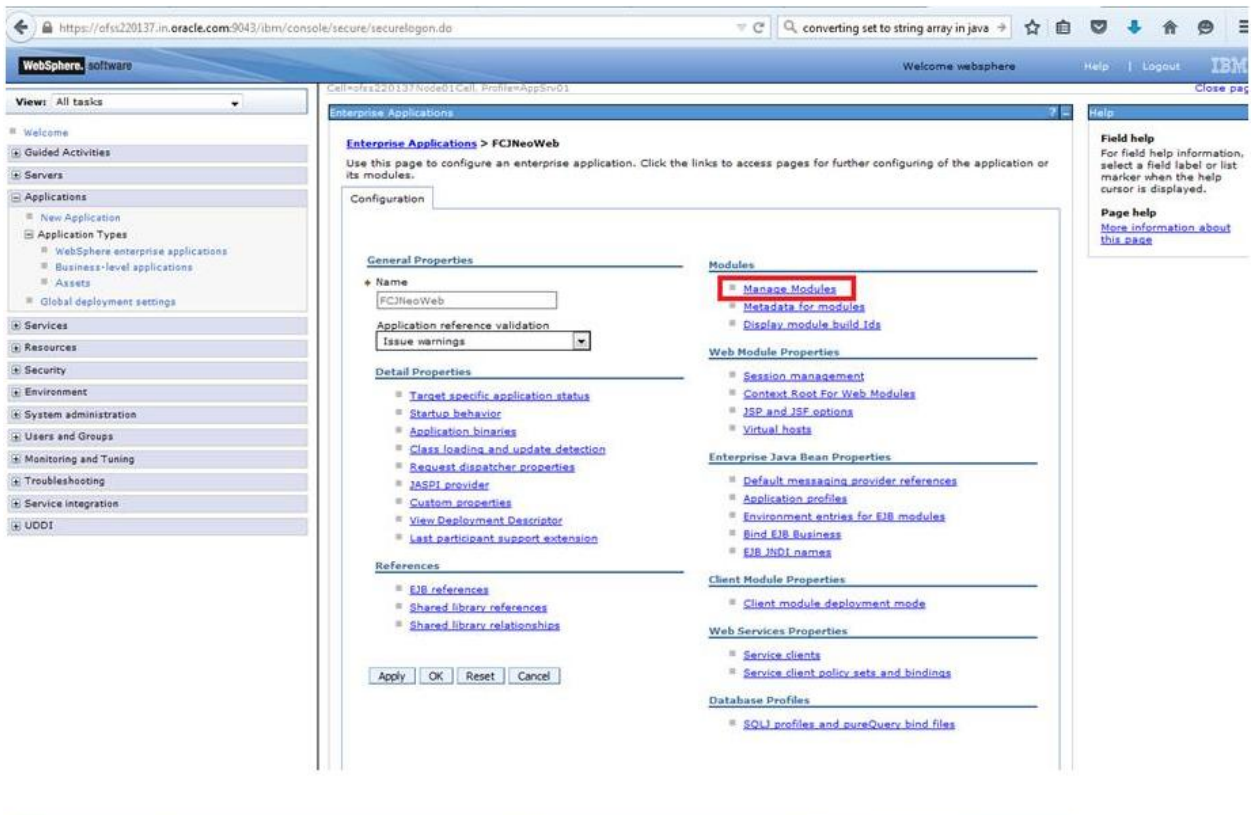
If standalone scheduler is enabled then below configuration should be done

1. Login to websphere admin console. Expand 'Application > Application Types> WebSphere enterprise applications'

The following screen is displayed



Click on the application 'FCUBSApp' below screen is displayed.



Click on 'Manage Modules'

Enterprise Applications > ECJNeoWeb > Manage Modules

Manage Modules

Specify targets such as application servers or clusters of application servers where you want to install the modules that are contained in your application. Modules can be installed on the same application server or dispersed among several application servers. Also, specify the Web servers as targets that serve as routers for requests to this application. The plug-in configuration file (plugin-cfg.xml) for each Web server is generated, based on the applications that are routed through.

Clusters and servers:
 WebSphere:cell=ofss220137Node01Cell,node=ofss220137Node01,server=server1

Select	Module	URI	Module Type	Server
<input type="checkbox"/>	FCJGeneralEJB.jar	FCJGeneralEJB.jar,META-INF/eqb-jar.xml	EJB Module	WebSphere:cell=ofss220137Node01Cell,node=ofss220137Node01,server=server1
<input type="checkbox"/>	FCJSMS.jar	FCJSMS.jar,META-INF/eqb-jar.xml	EJB Module	WebSphere:cell=ofss220137Node01Cell,node=ofss220137Node01,server=server1
<input type="checkbox"/>	FCJBatch.jar	FCJBatch.jar,META-INF/eqb-jar.xml	EJB Module	WebSphere:cell=ofss220137Node01Cell,node=ofss220137Node01,server=server1
<input type="checkbox"/>	FCJServiceEJB.jar	FCJServiceEJB.jar,META-INF/eqb-jar.xml	EJB Module	WebSphere:cell=ofss220137Node01Cell,node=ofss220137Node01,server=server1
<input type="checkbox"/>	FCJScheduler.jar	FCJScheduler.jar,META-INF/eqb-jar.xml	EJB Module	WebSphere:cell=ofss220137Node01Cell,node=ofss220137Node01,server=server1
<input type="checkbox"/>	FCJRTT.jar	FCJRTT.jar,META-INF/eqb-jar.xml	EJB Module	WebSphere:cell=ofss220137Node01Cell,node=ofss220137Node01,server=server1
<input checked="" type="checkbox"/>	FlexCubeCorporate	ECJNeoWeb.war,WEB-INF/web.xml	Web Module	WebSphere:cell=ofss220137Node01Cell,node=ofss220137Node01,server=server1

Click on 'FlexCubeCorporate'

Enterprise Applications > ECJNeoWeb > Manage Modules > ECJNeoWeb.war

Use this page to configure an instance of a deployed web module in the application. This page contains deployment-specific information for a web module and session management settings.

Configuration

General Properties

- URI:
- Alternate deployment descriptor:
- Starting weight:
- Class loader order:
 - Classes loaded with parent class loader first
 - Classes loaded with local class loader first (parent last)

Additional Properties

- [View Module Class Loader](#)
- [Custom properties](#)
- [Target specific application status](#)
- [View Deployment Descriptor](#)
- [Session Management](#)

Field help
For field help information, select a field label or list marker when the help cursor is displayed.

Page help
[More information about this page](#)

Select “Classes loaded with local class loader first (parent last)” from the dropdown ‘Class loader order’

Click ‘Apply’ button

The screenshot displays the IBM WebSphere Administration Console interface. The top navigation bar includes the 'WebSphere, software' logo, the user name 'Welcome saravanan', and links for 'Help' and 'Logout'. The left sidebar contains a navigation tree with categories like 'Welcome', 'Guided Activities', 'Servers', 'Applications', 'Services', 'Resources', 'Security', 'Environment', 'System administration', 'Users and Groups', 'Monitoring and Tuning', 'Troubleshooting', 'Service integration', and 'UDDI'. The main content area is titled 'Enterprise Applications' and shows a breadcrumb path: 'Enterprise Applications > FCUBSApp2 > Manage Modules > FCJNeoWeb.war'. A 'Messages' box at the top indicates that changes have been made to the local configuration and provides instructions to 'Save directly to the master configuration' or 'Review changes before saving or discarding'. Below this, a 'Configuration' section is visible, containing two tabs: 'General Properties' and 'Additional Properties'. Under 'General Properties', the 'Class loader order' dropdown menu is expanded, showing the selected option 'Classes loaded with parent class loader first'. At the bottom of the configuration section, there are buttons for 'Apply', 'OK', 'Reset', and 'Cancel'. A 'Field help' section on the right side of the page provides information on how to use the help markers.

Click ‘Save’ link and restart the server.



Deploying Oracle FLEXCUBE on WebSphere
[October] [2015]
Version 12.1.0.0.0

Oracle Financial Services Software Limited
Oracle Park
Off Western Express Highway
Goregaon (East)
Mumbai, Maharashtra 400 063
India

Worldwide Inquiries:
Phone: +91 22 6718 3000
Fax:+91 22 6718 3001
www.oracle.com/financialservices/

Copyright © [2007], [2015], Oracle and/or its affiliates. All rights reserved.

Oracle and Java are registered trademarks of Oracle and/or its affiliates. Other names may be trademarks of their respective owners.

U.S. GOVERNMENT END USERS: Oracle programs, including any operating system, integrated software, any programs installed on the hardware, and/or documentation, delivered to U.S. Government end users are "commercial computer software" pursuant to the applicable Federal Acquisition Regulation and agency-specific supplemental regulations. As such, use, duplication, disclosure, modification, and adaptation of the programs, including any operating system, integrated software, any programs installed on the hardware, and/or documentation, shall be subject to license terms and license restrictions applicable to the programs. No other rights are granted to the U.S. Government.

This software or hardware is developed for general use in a variety of information management applications. It is not developed or intended for use in any inherently dangerous applications, including applications that may create a risk of personal injury. If you use this software or hardware in dangerous applications, then you shall be responsible to take all appropriate failsafe, backup, redundancy, and other measures to ensure its safe use. Oracle Corporation and its affiliates disclaim any liability for any damages caused by use of this software or hardware in dangerous applications.

This software and related documentation are provided under a license agreement containing restrictions on use and disclosure and are protected by intellectual property laws. Except as expressly permitted in your license agreement or allowed by law, you may not use, copy, reproduce, translate, broadcast, modify, license, transmit, distribute, exhibit, perform, publish or display any part, in any form, or by any means. Reverse engineering, disassembly, or decompilation of this software, unless required by law for interoperability, is prohibited.

The information contained herein is subject to change without notice and is not warranted to be error-free. If you find any errors, please report them to us in writing.

This software or hardware and documentation may provide access to or information on content, products and services from third parties. Oracle Corporation and its affiliates are not responsible for and expressly disclaim all warranties of any kind with respect to third-party content, products, and services. Oracle Corporation and its affiliates will not be responsible for any loss, costs, or damages incurred due to your access to or use of third-party content, products, or services.